

ELANTRA

2023



Because of you.

At Hyundai, we believe that only with you in mind will we be able to provide progress, innovation, sustainability and mobility that evolves the driving experience.

We prioritize research and development in connected and clean mobility solutions, continuing to push boundaries and challenge conventional thinking to bring you a connected experience and a sustainable vision for the future.

We are inspired to build platforms and technology that provide you with more ways to enjoy quality time with our vehicles. To live a comfortable and connected life where you enjoy the journey, not just the destination.

We also tailor our vehicles with features that meet the demands of our Canadian landscape, so you can take on our extreme winters and amazing summers in comfort and with confidence. And, of course, we back our vehicles with one of the best automotive warranties in the industry.

We do all of this because of you.





Stay connected and protected.

There's no mistaking the striking and sporty design of the ELANTRA.

Inside, a range of available technology features like wireless Apple CarPlay™ and Android Auto™ helps make it effortless to stay connected wherever you go.

But the smart technology doesn't just keep you connected, it also helps keep you protected. With advanced Hyundai SmartSense™ features, like standard Forward Collision-Avoidance Assist with Pedestrian Detection and available Cyclist and Junction-Turning Detection¹ to help prevent a potential frontal collision — you feel protected and confident behind the wheel.



Striking from every angle.

From every angle the ELANTRA delivers a sporty and striking look. Bold, converging character lines create a unique three-dimensional presence along the side. A dominant bold grille up front seamlessly integrates into the headlight architecture and the sleek-edged trunk lid further adds to the confident appearance.



Available N Line front fascia and glossy black grille with emblem
Available LED headlights



Available LED tail lights



Available 18" alloy wheels

Designed around you.

Elevate your drive with the wraparound, driver-centric design of the ELANTRA. The sleek touch-screen display is tilted 10 degrees towards the driver, giving better sightlines and access from behind the wheel.

A number of available features are customizable to your liking, including the 8-way power driver's seat, the interior ambient lighting with 64 colour choices and the dual-zone automatic climate control. You can even adjust the depth of the cup holders to better fit your favourite coffee cup or extra-tall water bottle.



N Line model shown. May not be exactly as shown.



Standard heated front seats and available heated steering wheel



Available interior ambient lighting (64 colour choices)



Available dual-zone automatic climate control



Available power sunroof

Technology to transform your drive.

The features offered in the ELANTRA are nothing short of impressive. When you step inside — using the available proximity key, of course — you are greeted by an available sleek digital instrument cluster, flowing into the available 10.25" touch-screen display with navigation. Add in the available wireless charging pad▼ and the available Bose® sound system and you'll know what we mean by “transform your drive.”



Standard Apple CarPlay™ and Android Auto™ with available wireless connectivity



Available 10.25" full digital instrument cluster



Available 10.25" touch-screen with wired Apple CarPlay™ and Android Auto™, and navigation system



Available Bose® premium sound system



Available wireless charging pad▼



Standard 8.0" touch-screen display

Enjoy the power of choice.

The 2023 ELANTRA offers a range of three engine options throughout the model lineup, from our fuel-efficient Smartstream 1.6L Hybrid engine on our Luxury Hybrid model to our powerful 1.6L Turbocharged engine equipped on the N Line model.

Push the boundaries of efficiency and performance.



Gasoline

Standard Smartstream 2.0L GDI engine

147	132
horsepower	lb.-ft. torque

Available N Line 1.6L Turbocharged GDI engine

201	195
horsepower	lb.-ft. torque



Hybrid

Available Smartstream 1.6L GDI Hybrid engine
+ 32 kW electric motor with 1.32 kWh lithium-ion battery

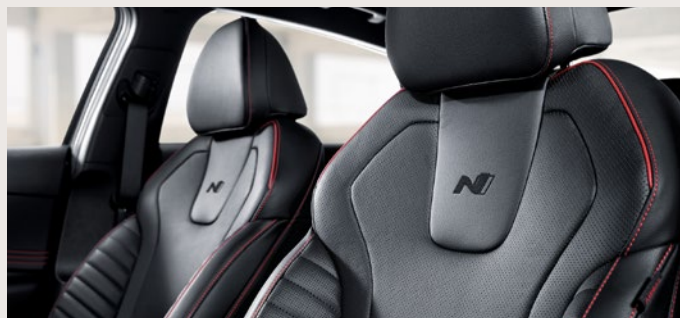
139	195
combined horsepower	lb.-ft. torque



Discover the ELANTRA N Line.

The available N Line model is equipped with a 1.6-litre Turbocharged engine and outfitted with sport-tuned suspension and steering designed to elevate on-road dynamics, responsiveness and feel — which makes cornering a true pleasure.

Exclusive N Line model features:



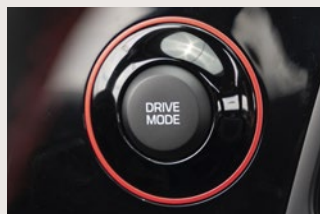
N Line sport leather seats

Embossed with an “N” logo, the leather sport seats are lined with red contrast stitching and piping.



N 7-speed Dual Clutch Transmission (N DCT)

The N DCT is an automated manual transmission with two separate clutches for increased efficiency, faster shifting and driving convenience.



Drive Mode Select

At the press of a button find your preferred powertrain, steering and stability control settings. Choose from three different modes: **Normal**, **Sport** and **Smart**.



Sport-tuned suspension and steering

The sport-tuned suspension with multi-link rear independent suspension is designed to give you a more dynamic drive and even sportier performance — making it perfect for those tight corners.



Larger disc brakes

The N Line model is equipped with larger disc brakes for better braking performance, tuned for even more responsive and precise handling capabilities.

Ultimate convenience. Ultimate connectivity.

Bluelink[®] is our available connected vehicle system that conveniently keeps you connected with your Hyundai via the smartphone app and offers a suite of services at the press of a button.

This innovative connected system gives you the ability to remotely lock/unlock and start your vehicle, adjust climate controls, keep track of your vehicle's health with smart diagnostic tools and so much more.



Remote start with
climate control

SOS

SOS emergency and
roadside assistance



Automatic collision
notification



Remote lock/unlock



Find my car



Local search



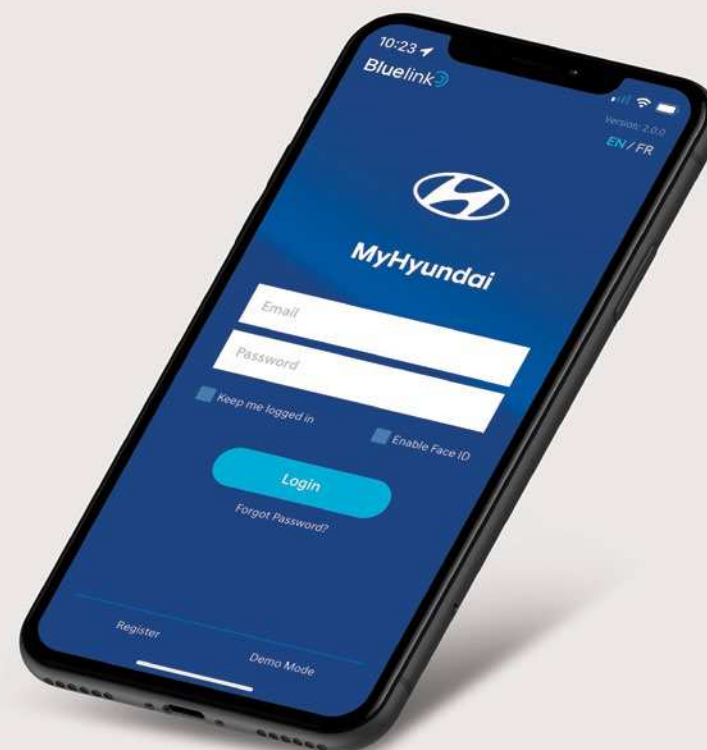
Real-time
diagnostics



Find a dealer

3 YEAR

Complimentary
3-year subscription on
equipped models



Hyundai SmartSense™

Our suite of available Hyundai SmartSense™ safety features includes a range of camera, radar and motion detection technologies to provide you with added peace of mind.

Standard features:



Forward Collision-Avoidance Assist with Pedestrian Detection



Lane Departure Warning with Lane Keeping Assist



Lane Following Assist



Driver Attention Warning



High Beam Assist



Rear Occupant Alert



Tire Pressure Monitoring System

Available features:



Forward Collision-Avoidance Assist with Pedestrian, Cyclist and Junction-Turning Detection



Blind-Spot Collision-Avoidance Assist



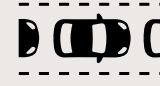
Rear Cross-Traffic Collision-Avoidance Assist



Safe Exit Warning



Adaptive Cruise Control with traffic stop and go



Highway Driving Assist



Parking Distance Warning - Reverse



Parking Collision-Avoidance Assist - Reverse

Find the ELANTRA that is right for you.

Essential

Standard equipment includes:

Performance features:

- Smartstream 2.0L MPI Atkinson 4-cylinder engine
- Smartstream Intelligent Variable Transmission with Drive Mode Select
- Engine idle stop and go*
- 4-wheel disc brakes
- Temporary compact spare tire

Exterior features:

- 15" alloy wheels
- Projection headlights with LED daytime running lights
- Automatic headlights
- Remote keyless entry with alarm
- Solar front and rear glass
- Heated body-coloured side mirrors
- Black-painted front grille

Interior features:

- 8.0" touch-screen display with wireless Apple CarPlay™ and Android Auto™
- AM/FM/MP3/HD audio system with 4 speakers
- Bluetooth® hands-free phone system with voice recognition
- Heated front seats
- Air conditioning
- 6-way manually adjustable driver's seat
- 4-way manually adjustable front passenger's seat
- 4.2" LCD instrument cluster display
- Power windows with driver's auto-down
- Dual USB outlets
- Power door locks
- Map, dome and trunk lights

Safety features:

- Forward Collision-Avoidance Assist with Pedestrian Detection
- Lane Departure Warning with Lane Keeping Assist
- Lane Following Assist
- High Beam Assist
- Driver Attention Warning
- Rear Occupant Alert
- Tire Pressure Monitoring System
- Rearview camera with dynamic guidelines
- Airbags (6) – driver (1), front passenger (1), driver and front passenger side impact (2), front/rear side impact curtains (2)
- Cruise Control (steering wheel mounted)

Preferred

Includes **Essential** equipment plus:
*Does not include engine idle stop and go

Exterior features:

- 16" alloy wheels
- Proximity keyless entry with push-button ignition and remote start
- Hands-free smart trunk release

Interior features:

- Premium cloth seating surfaces
- AM/FM/MP3/HD audio system with 6 speakers
- Leather-wrapped steering wheel
- Heated steering wheel
- Leather-wrapped shift knob
- Driver's auto-up/down window with pinch protection
- Sliding sunvisors with illuminated vanity mirrors

Safety features:

- Blind-Spot Collision-Avoidance Assist
- Rear Cross-Traffic Collision-Avoidance Assist
- Safe Exit Warning

Optional: Tech package

- 10.25" full digital instrument cluster
- 10.25" colour touch-screen with wired Apple CarPlay™ and Android Auto™, and navigation system
- Ambient interior lighting
- Power tilt-and-slide sunroof
- Dual-zone automatic climate control
- Auto-defogging windshield system
- Bluelink® connected vehicle system[ⓐ]
- AM/FM/SiriusXM™/MP3/HD audio system with 6 speakers

Luxury

Includes **Preferred with Tech package** equipment plus:

Exterior features:

- 17" alloy wheels
- LED tail lights
- LED integrated side mirror turn signal repeaters
- Dark chrome front grille and lower bumper garnishes
- Satin-finished beltline moulding

Interior features:

- Leather seating surfaces
- Bose® AM/FM/SiriusXM™/MP3/HD premium audio system with 8 speakers
- Wireless charging pad[†]
- 60/40 split-fold flat rear seats
- Rear centre armrest with cup holders
- Front passenger seatback pocket

Safety features:

- Forward Collision-Avoidance Assist with Pedestrian, Cyclist and Junction-Turning Detection
- Adaptive Cruise Control with traffic stop and go
- Highway Driving Assist
- Electronic parking brake

Optional: Hybrid package

- Smartstream 1.6L GDI 4-cylinder engine with 32 kW electric motor
- 6-speed EcoShift Dual Clutch Transmission
- Multi-link rear suspension
- Parking Distance Warning – Reverse
- Parking Collision-Avoidance Assist – Reverse

N Line Ultimate

Includes **Luxury** equipment plus:

Performance features:

- Smartstream 1.6L Turbocharged GDI 4-cylinder engine
- 7-speed Dual Clutch Transmission with steering wheel-mounted paddle shifters
- Larger disc brakes
- Multi-link rear suspension
- Sport-tuned suspension and steering

Exterior features:

- 18" alloy wheels
- N Line front fascia, grille and bumper
- N Line rear fascia with diffuser element
- Glossy black rear lip spoiler
- Black beltline moulding
- Chrome dual-tip twin round exhaust outlets
- LED headlights (high/low beam)
- Full LED tail lights

Interior features:

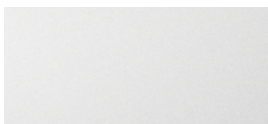
- N Line sport leather seats
- Power 8-way driver's seat with lumbar support adjustment
- Aluminum sport pedals
- Black interior headliner

Colours and wheels.

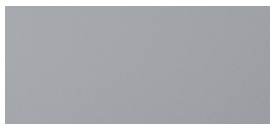
Exterior colours*



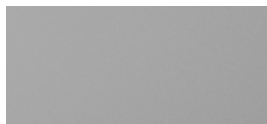
Space Black



Polar White



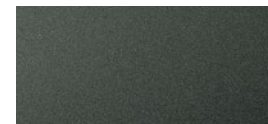
Fluid Metal



Cyber Grey



Intense Blue
Not available on Essential model

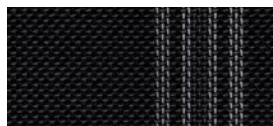


Amazon Grey
Not available on Essential model

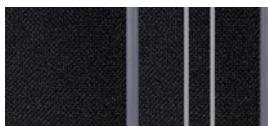


Fiery Red
Not available on Essential model

Interior colours*



Black cloth
Standard on Essential model



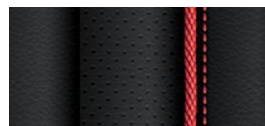
Black premium cloth
Standard on Preferred model



Black leather
Standard on Luxury model



Light grey leather
Available on Luxury model
(Space Black, Polar White, Cyber Grey, Intense Blue and Amazon Grey exterior colours only)



Black leather with red stitching
Standard on N Line model

Wheels



15" alloy wheel
Standard on Essential model



16" alloy wheel
Standard on Preferred model



17" alloy wheel
Standard on Luxury model



18" alloy wheel
Standard on N Line model

*Exterior and interior colour options and/or availability may change without notice. Choice of interior colour is dependent on model and/or exterior colour selection. Colours shown are for reference only and may vary from the actual hue. Visit hyundaicanada.com or see your dealer for details.

Accessories.



Accessory frame

An accessory frame makes it quick and easy to attach hitch-mounted cargo equipment, such as bikes and ski racks. Frame not intended for towing.



Premium all-weather floor liners

Premium all-weather floor liners were designed to cover the interior carpet, providing maximum protection against the elements that other mats cannot offer. Their unique and durable design features a non-slip surface for added comfort and a long-lasting premium look. Remove carpet mats prior to installation.



Premium all-weather cargo tray

Protect your interior cargo area with style. This durable, custom-fit premium cargo tray protects from spills and messy loads while helping keep your cargo area looking new for years to come.



Plastic hood protector

Help prevent dents and scratches caused by road and vehicle debris with an attractive plastic hood protector.



Rear bumper protector black film

Protection film easily applies to protect from scratches and scrapes while maintaining the visual appearance of your vehicle.



Rally Armor® mud guards

Rally Armor® mud guards introduce exceptional paint protection from road debris and lend a racing-inspired image to your Hyundai. Packaged complete with stainless steel installation hardware; the kit does not require any drilling and installs to existing mounting points.



Dealer stamp

One of the best-backed warranties in Canada.

You will see that a number of our vehicles have received multiple awards from the most reputable third-party organizations, so you can take their word when it comes to the quality of our vehicles. This quality is equally matched by the quality of our warranty. We stand confidently behind our products to give you ultimate peace of mind with a 5-year/100,000 kilometre Comprehensive Limited Warranty¹. We also provide a 5-year/Unlimited kilometre Roadside Assistance Program^{1†} featuring flat tire changing, lockout service and more. Just one toll-free call away, 24 hours a day.

^{TM/®}The Hyundai name, logos, product names, feature names, images and slogans are trademarks owned or licensed by Hyundai Auto Canada Corp.. Specifications, features, illustrations, accessories, materials and equipment and all other information shown in this brochure are based on the latest information available at the time of publication. Although descriptions are believed to be correct, accuracy cannot be guaranteed. Hyundai Auto Canada Corp. reserves the right to make any changes or modifications at any time, without notice or obligation, including, without limitation, in colour, specifications, features, accessories, materials, equipment and models. Some vehicles are shown with optional equipment. All Hyundai warranties have no deductible. 'Hyundai's Comprehensive Limited Warranty coverage covers most vehicle components against defects in workmanship under normal use and maintenance conditions. 'Hyundai's 24-Hour Roadside Assistance Program is a limited service and does not cover certain costs or expenses. Roadside Assistance is not a warranty. 'Apple CarPlayTM may not be available on all devices and may not be available in all countries or regions. Visit www.apple.com for further details and any applicable limitations. Apple and Apple CarPlay are trademarks of Apple Inc.. 'Android Auto may not be available on all devices and may not be available in all countries or regions. Visit www.android.com for further details and any applicable limitations. Android and Android Auto are trademarks of Google Inc.. 'Vehicle is equipped with the ability to access SiriusXM radio. Does not include subscription. The SiriusXMTM name is a trademark of SiriusXM Satellite Radio Inc.. 'Available on select models only. Bluelink[®] includes 3 years of service without charge. The Bluelink service is available for new vehicle purchases and leases subject to the Bluelink subscription terms and conditions. Only use Bluelink and corresponding devices when safe to do so. Cellular and GPS coverage is required. Features, specifications and fees may vary by model and are subject to change. For more on details and limitations, visit hyundaicanada.com or your authorized Hyundai dealer. 'Forward Collision-Avoidance Assist (FCA) is designed to detect vehicles, pedestrians or cyclists (depending on the specific FCA type with which the vehicle is equipped) that are directly in front of the vehicle. FCA will not detect all vehicles, pedestrians, cyclists or other objects (as applicable). FCA will not work on winding or hilly roads, during certain weather conditions such as rain, snow, fog and any other times of limited visibility. The speed at which FCA initiates full braking depends on the type of FCA system equipped on the ELANTRA. FCA initiates full braking at speeds between 10 and 60 km/h (vehicle detection) or 10 and 60 km/h (pedestrian detection) if the ELANTRA is equipped with the FCA "camera-type" system. FCA initiates full braking at speeds between 10 and 75 km/h and 10 and 85 km/h (vehicle detection, depending on whether vehicle ahead is in motion) or 10 and 65 km/h (pedestrian and cyclist detection) if the ELANTRA is equipped with the FCA "camera and radar-type" system. FCA will not detect all vehicles, pedestrians and cyclists under certain conditions. Junction-Turning Detection (JTD) provides audible warnings if the system recognizes potential risk of collision with an oncoming vehicle and will automatically apply brakes depending on the collision level. JTD will operate when the driver turns left, if your vehicle's turn signal is on and vehicle speed is between 10 and 30 km/h, and oncoming vehicle's speed is between 30 and 70 km/h. See Owner's Manual for detailed descriptions of example conditions in which FCA may not detect a vehicle, pedestrian or cyclist, or JTD will not detect oncoming vehicle. FCA and JTD are not substitutes for safe driving. Always check your surroundings when driving. See Owner's Manual for further details and limitations. *Not all devices will be compatible. See Owner's Manual for further details. Bluetooth[®] word mark and logos are registered trademarks owned by Bluetooth SIG, Inc.. HomeLink[®] is a registered trademark of Johnson Controls Inc.. Bose[®] is a registered trademark of Bose Corporation. All other trademarks and trade names are those of their respective owners. Some images shown with special graphic effects.

Hyundai Auto Canada Corp.
hyundaicanada.com

