

# VENUE

2023



# Because of you.

At Hyundai, we believe that only with you in mind will we be able to provide progress, innovation, sustainability and mobility that evolves the driving experience.

We prioritize research and development in connected and clean mobility solutions, continuing to push boundaries and challenge conventional thinking to bring you a connected experience and a sustainable vision for the future.

We are inspired to build platforms and technology that provide you with more ways to enjoy quality time with our vehicles. To live a comfortable and connected life where you enjoy the journey, not just the destination.

We also tailor our vehicles with features that meet the demands of our Canadian landscape, so you can take on our extreme winters and amazing summers in comfort and with confidence. And, of course, we back our vehicles with one of the best automotive warranties in the industry.

We do all of this because of you.





## The VENUE.

An urban adventurer, the VENUE has a strong yet sophisticated SUV profile that radiates road presence. With available Hyundai SmartSense™ features like Forward Collision-Avoidance Assist with Pedestrian Detection and Blind-Spot Collision Warning, you can take on the hustle of the concrete jungle with confidence.

The VENUE is a trend setter that offers a number of standard features such as:

- ✓ Heated front seats
- ✓ 8.0" touch-screen display
- ✓ Android Auto™<sup>®</sup> and Apple CarPlay™<sup>Δ</sup>
- ✓ Heated side mirrors with integrated turn signal indicators



**DEP**  
DEALER ePROCESS

# Express your sense of style.

Modern lines and bold design elements make every entrance a head-turner in the VENUE. Express your own sense of style with a range of fun and vibrant colours, plus the option to choose trendy two-tone colour accents on select models. Distinctive wraparound headlights flow into a strong side character line that continues through to the tail lights. Available 17" alloy wheels with a strikingly unique spoke pattern heighten the VENUE's bold individuality.



Available two-tone body colour



Available LED daytime running lights



Available LED headlights with active cornering lights



Available 17" alloy wheels



Ultimate model shown with Denim Blue Premium Cloth

## Enjoy your space.

The VENUE provides practical space for your everyday needs. The convenient rear shelf makes it easy to subdivide your cargo area and it simply tucks away when not in use, maximizing your cargo space. Rear seats also split and fold 60/40 to make room for longer items.



Standard 60/40 split-folding rear seats



Standard 902 L cargo capacity (with rear seats folded down)

# Comfort and convenience at your fingertips.

Step inside the VENUE and enjoy the features that make the cabin space your favourite place to be. Standard Android Auto™ and Apple CarPlay™ with wireless connectivity means you can access your favourite apps intuitively from the 8.0" touch-screen display. Listen to your favourite playlist, tune into a podcast or send an "on the way" message via voice commands. On cold mornings, commute without the chill thanks to the standard heated front seats and available heated steering wheel. With the convenience of the available proximity key with remote start capability, the VENUE can make every journey a truly seamless experience.



Available power sunroof



Standard heated front seats



Available heated steering wheel



Standard 8.0" touch-screen display



Standard 4.2" digital cluster display



Available proximity keyless entry with push-button ignition and remote start



## Explore your city.

From weekend fun to your daily commute, the VENUE will get you there efficiently with a 121 horsepower Smartstream G1.6 litre engine.

Explore all day with standard Smartstream Intelligent Variable Transmission, designed to replicate the natural acceleration of conventional automatic shifting gears with the added benefit of greater fuel efficiency.

Take on different road conditions with confidence by switching between the available terrain modes. This intuitive feature can adjust traction accordingly for optimal grip to help improve handling when you're in the snow, sand or mud.



# Hyundai SmartSense™

Our suite of available Hyundai SmartSense™ safety features includes a range of camera, radar and motion detection technologies to provide you with added peace of mind.

## Standard features:



Forward Collision-Avoidance  
Assist with Pedestrian  
Detection



Lane Departure  
Warning with  
Lane Keeping Assist



Driver Attention  
Warning



High Beam  
Assist



Rear Occupant  
Alert

## Available features:



Blind-Spot Collision  
Warning



Rear Cross-Traffic  
Collision Warning



# Find the VENUE that is right for you.

## Essential FWD

Standard equipment includes:

### Performance features:

- Smartstream G1.6 engine (121 horsepower, 113 lb.-ft. torque)
- Smartstream Intelligent Variable Transmission (IVT) with cruise control

### Exterior features:

- 15" steel wheels with P185/65R15 all-season tires
- Automatic headlights
- Black front grille
- Body-coloured heated side mirrors with turn signal indicators

### Interior features:

- 8.0" touch-screen display with wireless Apple CarPlay™<sup>MA</sup> and Android Auto™<sup>MO</sup>
- 4.2" LCD multi-information cluster display
- USB and MP3 auxiliary input jacks
- Bluetooth® hands-free phone system with voice recognition
- Steering wheel-mounted audio and phone controls
- Air conditioning with manual temperature control
- Heated front seats
- 60/40 split-fold flat rear seats with adjustable head restraints
- Rearview camera with dynamic guidelines
- Power windows with driver's auto-down
- 6-way adjustable driver's seat
- Cloth seats
- Driver's sliding sunvisor
- Rear cargo net hooks
- HD/AM/FM/MP3 audio system with 4 speakers
- Tilt-and-telescopic steering wheel
- Two-stage adjustable trunk floor with retractable rear cargo cover

### Safety features:

- Remote keyless entry with alarm
- Temporary spare tire
- Tire Pressure Monitoring System
- 6 airbags
- Forward Collision-Avoidance Assist with Pedestrian Detection
- Lane Keeping Assist
- Driver Attention Warning
- High Beam Assist
- Rear Occupant Alert

### Optional:

- Two-tone exterior paint (includes roof, side mirrors and exterior body accents)

## Preferred FWD

Includes Essential FWD standard equipment plus:

### Performance features:

- Drive Mode Select with terrain modes (Snow, Sand and Mud)

### Exterior features:

- 15" aluminum alloy wheels with P185/65R15 all-season tires
- Black roof rails

### Interior features:

- Volant chauffant
- Volant et levier de boîte gainés de cuir
- Clé à capteur de proximité avec démarrage à bouton-poussoir et démarrage à distance
- Console centrale avant avec appuie-bras coulissant

### Safety features:

- Blind-Spot Collision Warning with Lane Change Assist
- Rear Cross-Traffic Collision Warning

### Optional:

- Two-tone exterior paint (includes roof, side mirrors and exterior body accents)

## Ultimate FWD

Includes Preferred FWD standard equipment plus:

### Performance features:

- 4-wheel disc brakes (front: 280 mm/rear: 262 mm)

### Exterior features:

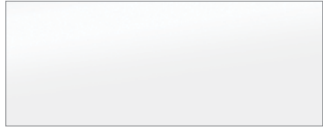
- 17" aluminum alloy wheels with P205/55R17 all-season tires
- Power sunroof
- Chrome front grille
- LED daytime running lights
- LED headlights with active cornering lights

### Interior features:

- Automatic temperature control
- Power windows with driver's auto-up/down
- 6-speaker audio system, including 2 tweeters
- Premium cloth (includes Black and Denim Blue options) and interior colour accents
- Front passenger seatback pocket

# Colours and wheels.

## Single-tone exterior colours\*



**Polar White**



**Space Black**



**Intense Blue**



**Fiery Red**



**Typhoon Silver**



**Galactic Grey**  
Available on Ultimate model only

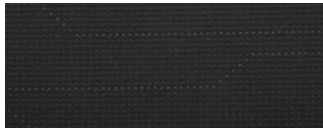


**Cosmic Grey**  
Available on Ultimate model only



**Denim Blue**  
Available on Ultimate model only

## Interior colours\*



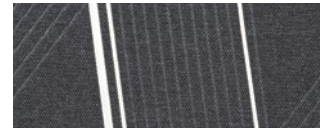
**Black cloth**  
Standard on Essential model



**Black stitched cloth**  
Standard on Preferred model



**Black premium cloth**  
Standard on Ultimate model (not offered with Denim Blue exterior colour)



**Denim Blue premium cloth**  
Available on Ultimate model (with Intense Blue and Denim Blue exterior colours only)

## Wheels



**15" steel wheel**  
Standard on Essential model



**15" alloy wheel**  
Standard on Preferred model



**17" alloy wheel**  
Standard on Ultimate model

## Two-tone exterior colours\*

The Essential and Preferred models feature optional two-tone body colour accents that heighten the VENUE's style, including the roof, side mirrors and details along the wheel arch, door garnish and bumper areas. Choose between the following to customize your VENUE.



**Fiery Red with Space Black roof**



**Typhoon Silver with Space Black roof**



**Polar White with Space Black roof**



**Cosmic Grey with Space Black roof**



**Denim Blue with Polar White roof**

\*Exterior, interior and roof colour options and/or availability may change without notice. Choice of interior colour is dependent on model and/or exterior colour selection. Colours shown are for reference only and may vary from the actual hue. Visit [hyundaicanada.com](http://hyundaicanada.com) or see your dealer for details.



# Accessories.



## Accessory frame

An accessory frame makes it quick and easy to attach hitch-mounted cargo equipment, such as bikes and ski racks. Frame not intended for towing.



## Plastic hood protector

Help prevent dents and scratches caused by road and vehicle debris with an attractive plastic hood protector.



## Cross rails

This durable, quick-locking roof rack system lets you transport cargo easily, without sacrificing interior room. Not applicable to the Essential trim.



## Side visors

Complement your vehicle with a sleek and durable set of side visors that will help reduce glare while providing you with fresh air. Custom made for your vehicle using high quality reinforced tinted acrylic plastic, these visors will look good on your vehicle for years to come.



## Premium all-weather cargo tray

Protect your interior cargo area with style. This durable, custom-fit premium cargo tray protects from spills and messy loads while helping keep your cargo area looking new for years to come.



## Premium all-weather floor liners

Premium all-weather floor liners were designed to cover the interior carpet, providing maximum protection against the elements that other mats cannot offer. Their unique and durable design features a non-slip surface for added comfort and a long-lasting premium look. Remove carpet mats prior to installation.

<b>5</b> YEAR	<b>100,000 km</b> Comprehensive Limited Warranty <sup>1</sup>	<b>5</b> YEAR	<b>100,000 km</b> Emission Warranty
<b>5</b> YEAR	<b>100,000 km</b> Powertrain Warranty	<b>5</b> YEAR	<b>Unlimited km</b> Roadside Assistance Program <sup>11</sup>

Dealer stamp

## One of the best-backed warranties in Canada.

You will see that a number of our vehicles have received multiple awards from the most reputable third-party organizations, so you can take their word when it comes to the quality of our vehicles. This quality is equally matched by the quality of our warranty. We stand confidently behind our products to give you ultimate peace of mind with a 5-year/100,000 kilometre Comprehensive Limited Warranty<sup>1</sup>. We also provide a 5-year/Unlimited kilometre Roadside Assistance Program<sup>11</sup> featuring flat tire changing, lockout service and more. Just one toll-free call away, 24 hours a day.

<sup>11</sup>Hyundai's 24-Hour Roadside Assistance Program is a limited service and does not cover certain costs or expenses. Roadside Assistance is not a warranty. <sup>12</sup>Apple CarPlay™ may not be available on all devices and may not be available in all countries or regions. Visit [www.apple.com](http://www.apple.com) for further details and any applicable limitations. Apple and Apple CarPlay are trademarks of Apple Inc.. <sup>13</sup>Android Auto™ may not be available on all devices and may not be available in all countries or regions. Visit [www.android.com](http://www.android.com) for further details and any applicable limitations. Android and Android Auto are trademarks of Google Inc.. <sup>14</sup>The SiriusXM™ name is a trademark of SiriusXM Satellite Radio Inc.. Vehicle is equipped with the ability to access SiriusXM radio. Does not include subscription. <sup>15</sup>Available on select models only. BlueLink® includes 3 years of service without charge. The BlueLink service is available for new vehicle purchases and leases subject to the BlueLink subscription terms and conditions. Only use BlueLink and corresponding devices when safe to do so. Cellular and GPS coverage is required. Features, specifications, and fees may vary by model and are subject to change. For more on details and limitations, visit [hyundaicanada.com](http://hyundaicanada.com) or your authorized Hyundai dealer. Bluetooth® word mark and logos are registered trademarks owned by Bluetooth SIG, Inc.. All other trademarks and trade names are those of their respective owners. Some images shown with special graphic effects.

Hyundai Auto Canada Corp.  
[hyundaicanada.com](http://hyundaicanada.com)

